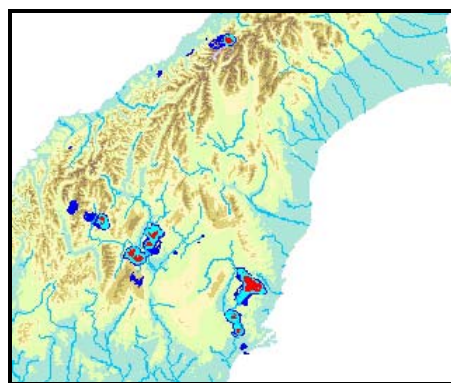


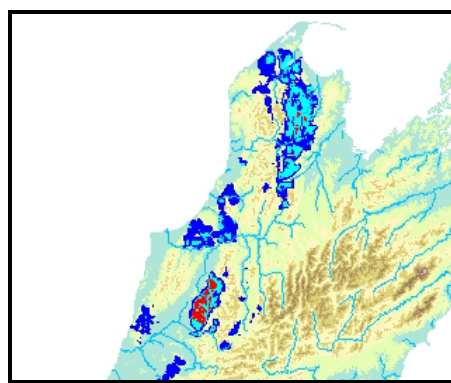
# Executive Summary

Crown Minerals of the Ministry of Economic Development in conjunction with the Institute of Geological and Nuclear Sciences Ltd has recognised the necessity of energising investment in the exploration industry to ensure continuity of the development of New Zealand's mineral resources. This CD is a response to that need, and comprises major compilation of geoscientific data, examining the potential for new discoveries of mesothermal gold mineralisation.



Potential for new world class Mesozoic gold discoveries in the Otago and Haast regions.

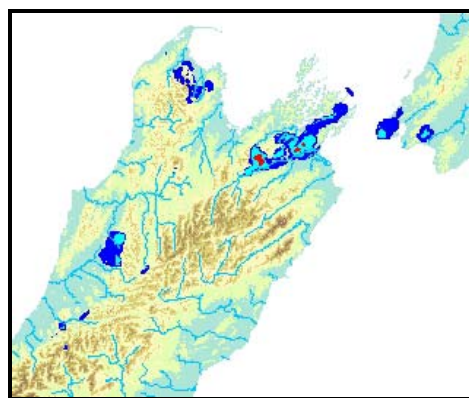
The CD and included report details untenanted (unpegged) prospective areas, some with historical gold workings, as well as new and under-prospected geological domains where potential for similar mineralisation exists. New Zealand already hosts an operating world class mesothermal goldmine (global resource over 5 million ounces) with another of similar size under development. The modelling study indicates significant potential for the discovery of new gold deposits.



Potential for additional high grade Palaeozoic gold discoveries in the Reefton region.

The compilation:

- Publishes significant new geological knowledge via maps and reports.
- Compiles digital and GIS deliverable datasets providing the most up to date and comprehensive geoscientific information on mesothermal gold mineralisation available on a national scale.
- Provides complementary cultural and geographic information in GIS format detailing current tenement, land use, national parks and infrastructure to allow effective spatial interrogation of the data.
- Details regional scale prospectivity for Palaeozoic and Mesozoic gold mineralisation using spatial pattern recognition techniques in GIS.



Favourable and unexplored prospective mesothermal gold districts in the Marlborough region.